

NICOLE LEFORE

CAPACITY

for sustainable
agricultural
water use



NICOLE LEFORE

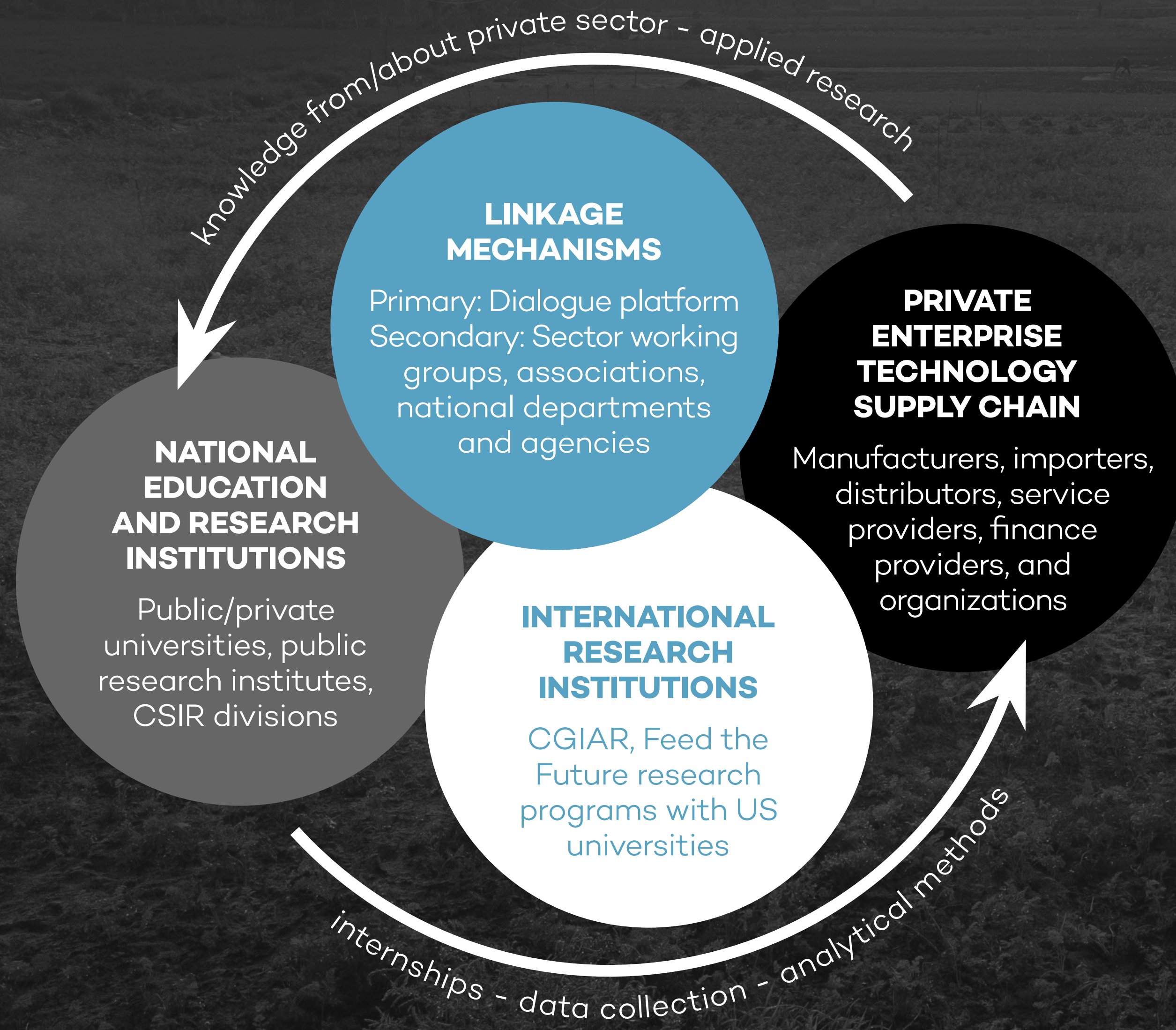
CAPACITY

**for sustainable
agricultural
water use**





Understand demand for science and INFORMATION, then strengthen supply of relevant SKILLS.



CASE 1

Facilitate linkages, enhance trust, and co-create knowledge across sectors and actors.



CASE 2

Support sustained capacity for decision-makers, scientists, and other information users to analyze, plan, monitor water resources.



KEY POINT

Smallholders are investing in irrigation with resilience and food security benefits. Policy, planning, and monitoring need to keep pace.



USAID
FROM THE AMERICAN PEOPLE



FEED THE FUTURE
The U.S. Government's Global Hunger & Food Security Initiative



TEXAS A&M
AGRILIFE

IWMI
International Water
Management Institute



ILRI
INTERNATIONAL
LIVESTOCK RESEARCH
INSTITUTE



FEED THE FUTURE INNOVATION LAB FOR SMALL SCALE IRRIGATION

| ILSSI.TAMU.EDU