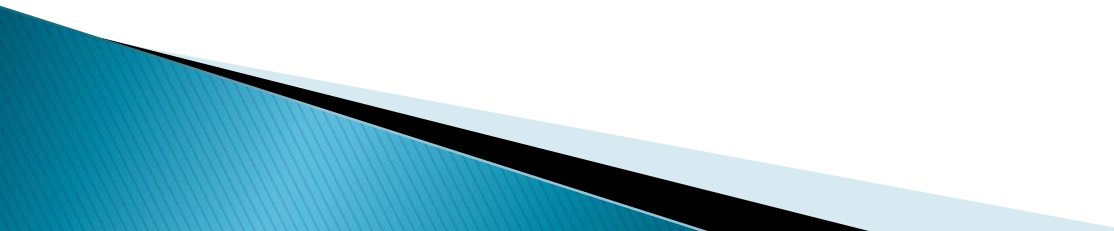




PILOT IRRIGATION PILOT– OCTOBER 2021

COCOA HEALTH AND EXTENSION DIVISION
(GHANA COCOA BOARD).

INTRODUCTION

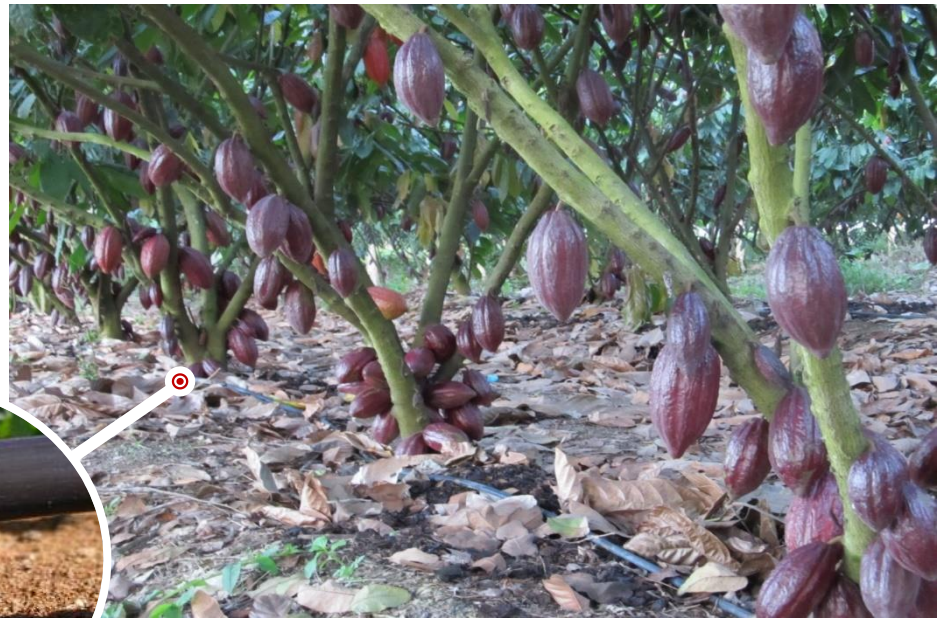
- ❖ Introducing irrigation into cocoa farms guarantee an all year round cocoa production which results in increased productivity of farms .
 - ❖ Flower abortions due to moisture stress is reduced and survival rate of seedlings on irrigated farms are significantly higher than non-irrigated farms.
 - ❖ The Irrigation project is to assist cocoa farmers to minimize the damaging effect of the dry weather as a result of climate change.
- 

IRRIGATION SYSTEMS DESIGNS

- ❖ Mist System Or Spray Tube Irrigation
- ❖ Drip Irrigation Systems



Mist



Drip

ACHIEVEMENT

Irrigation Construction Works:

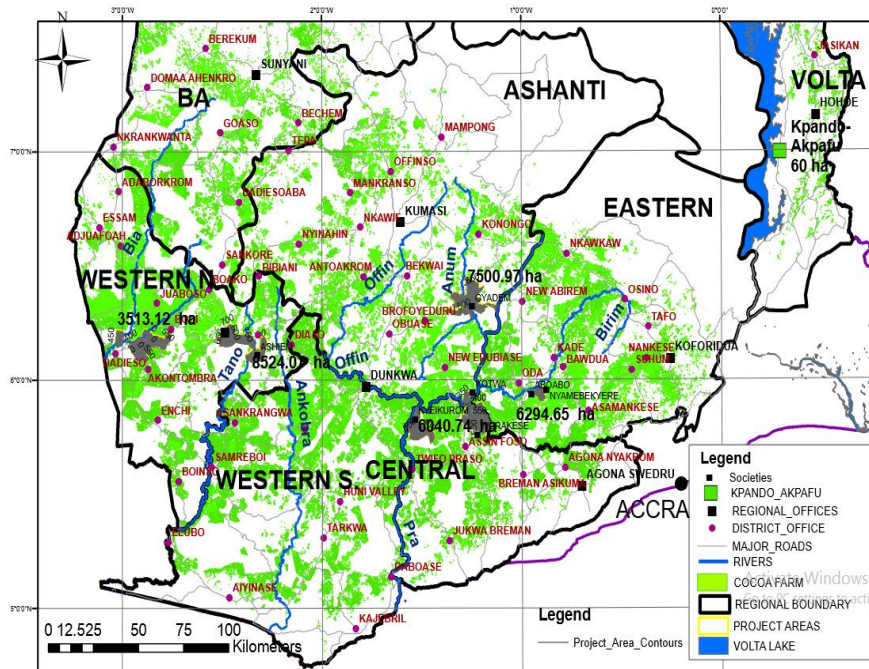
REGION	NUMBER OF BOREHOLES				IRRIGATION INSTALLATION	
	SPD	CRIG	FARMERS' FARM	TOTAL	FARMERS' FARM	SPD
Western North	1	-	32	33	21	-
Western South	6	-	47	53	9	-
Ashanti	9	2	25	36	2	1
Brong Ahafo	12	-	7	19	4	-
Eastern	15	9	10	34	4	2
Volta	3	-	-	3	-	-
Central	2	4	13	19	3	-
TOTAL	48	15	134	197	43	3



ONGOING WORKS

- ❖ An additional 9 Seed Production Division farms have been selected for irrigation and this will cover 110 ha; Installation works is ongoing.
- ❖ Nine (9) major river bodies in the Brong Ahafo, Ashanti and Central Cocoa Region have been earmarked as source of water for the scaling up of the Irrigation Project to cover 3,972.49 ha of cocoa farms
- ❖ Nine (9) companies have visited the sites of the selected farms for the irrigation and have conducted quality test and measured volumes of water required for the project

SCALE-UP USING RIVERS - NINE PROPOSALS ASSESSED



❖ A Stakeholder engagement has been done for the project areas.

❖ Presentation on the Irrigation Technology and Expectation for Cocoa Farmers is currently ongoing

❖ This presentation is to be followed by the tendering process



WORK DONE SO FAR

Irrigation Construction Works: Bunso Cocoa College



WORK DONE SO FAR

Irrigation Construction Works: Oda District



WORK DONE SO FAR

Irrigation Construction Works: Akim Sweduro District



WORK DONE SO FAR

Irrigation Construction Works: Nuanua, Twifo Praso



WORK DONE SO FAR

Irrigation Construction Works: Akwadum SPD Station

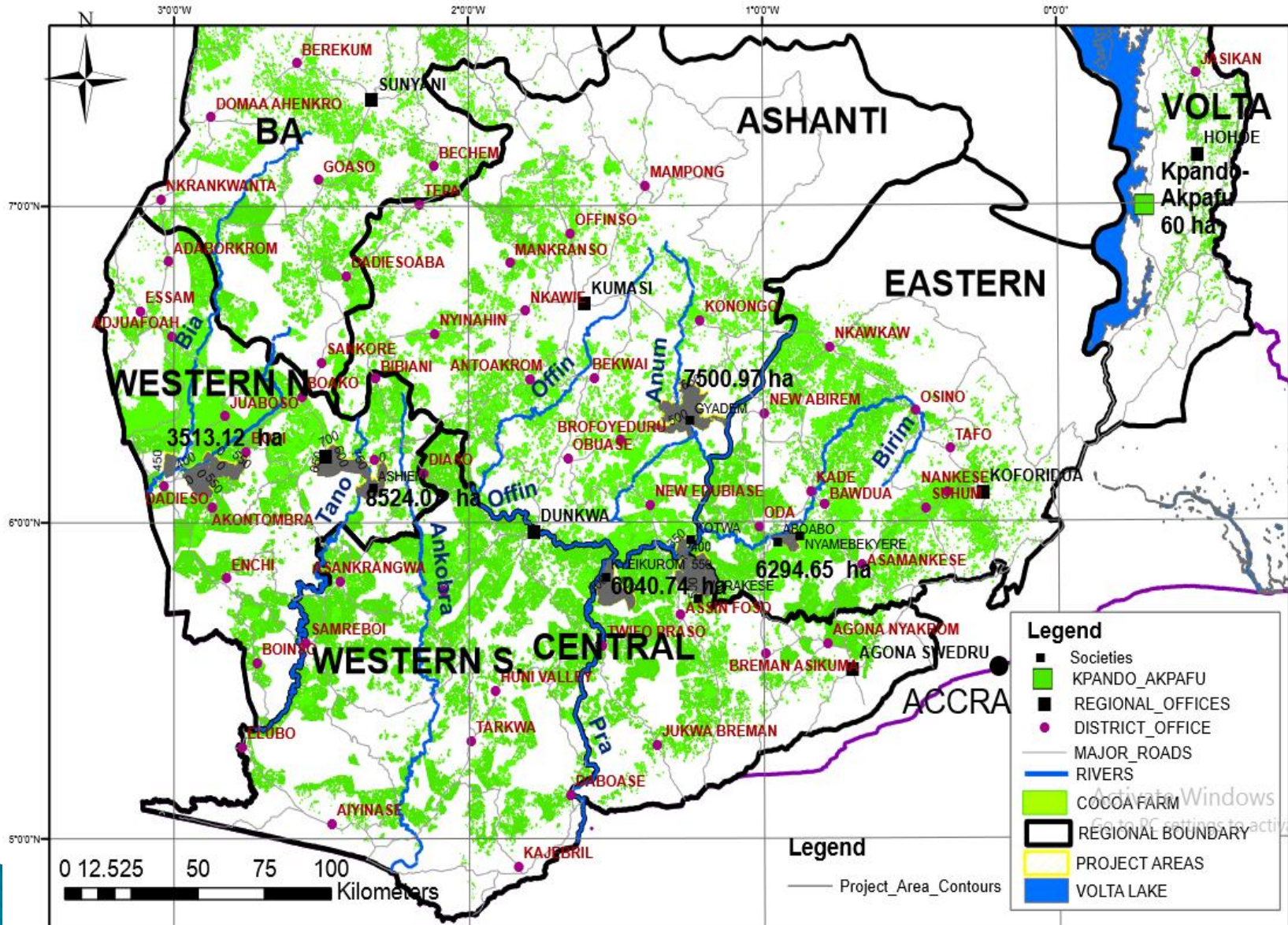


WORK DONE SO FAR

Irrigation Construction Works: Apedwa SPD Station



SCALE UP - IRRIGATION PROJECT



Cocoa Tree Water Requiremen



- ***Young Tree***
- ***Transplanting -1st year***
- ***10 lt/Day***

- ***1 Bucket***



Cocoa Tree Water Requirement



- ***Young Tree***
- ***2nd - 3rd***
- ***year***
- ***15 lt/Day***

- ***1.5 Bucket***



5 Ltr.



Cocoa Tree

Water Requirement



- *Mature Tree*
- *3rd – 20 years*
- *year*
- *30 lt/Day*

- *1 big Bucket*



PRODUCTIVITY OF PILOT IRRIGATED FARMS

- ❖ Per the field report o Irrigation, the average yield on the irrigated farm has increased by 109% (18 bags to 41 bags per hectare)
- ❖ Average yield - 2,624 Kg / ha (2.6 tons per ha)
- ❖ Some farmers have recorded 84 bags (5,376 Kg) per ha for the pilot project

TARGETS FOR THE IRRIGATION PROJECTS

- ❖ The target for project is to irrigate 3,972.49 ha of cocoa farms within a period of four (4) years.
- ❖ 75 % of the target will be implemented on productive cocoa farms
- ❖ The remaining 25% will be installed on **Rehabilitated Farms**

REHABILITATION

- ❖ Government and COCOBOD have secured over USD200M to rehabilitate CSSVD affected farms in the cocoa growing regions

Under the rehabilitation programme

- ❖ Service Providers (Private Sector Participation) have been engaged to provide services
- ❖ Over 36,000 of the youth in the rural areas have been employed
- ❖ Workload on weak and aged farmers have been drastically reduced.
- ❖ Food security in the scheme areas have ensured

IMAGES OF TREATED & REHABILITATED FARMS



Over 36,000 youths in the rural areas have been employed



DATA ON OUTBREAK AREAS

REGION	Cocoa Area	Area Diseased (CSSVD)	% Outbreak per Region	% of National Outbreak
	<i>Hectares</i>		<i>%</i>	
Western North	509,295.53	214,508.26	42.12	67.91
Western South	408,422.67	24,427.14	5.98	7.73
Ashanti	424,087.22	7,111.41	1.68	2.25
Brong Ahafo	223,884.24	11,097.09	4.96	3.51
Volta	30,205.64	4,990.42	16.52	1.58
Eastern	167,100.33	41,666.80	24.94	13.19
Central	150,170.67	12,084.94	8.05	3.83
TOTAL	1,913,166.30	315,886.06	16.51	

REPLANTING OF REHAB. FARMS



❖ Supply of plantain suckers to provide temporal shade

❖ Supply of economic tree to provide permanent shade

❖ Supply of disease tolerant high yielding hybrid seedlings

❖ Supply of compost to improve soil structure and enhance growth of seedlings.



REPLANTING PICTURES



1 YEAR FARM, WESTERN SOUTH



2 YEAR FARM, WESTERN NORTH

THANK YOU

