



FEED THE FUTURE

The U.S. Government's Global Hunger & Food Security Initiative



RESEARCH PROGRAM ON
Water, Land and
Ecosystems

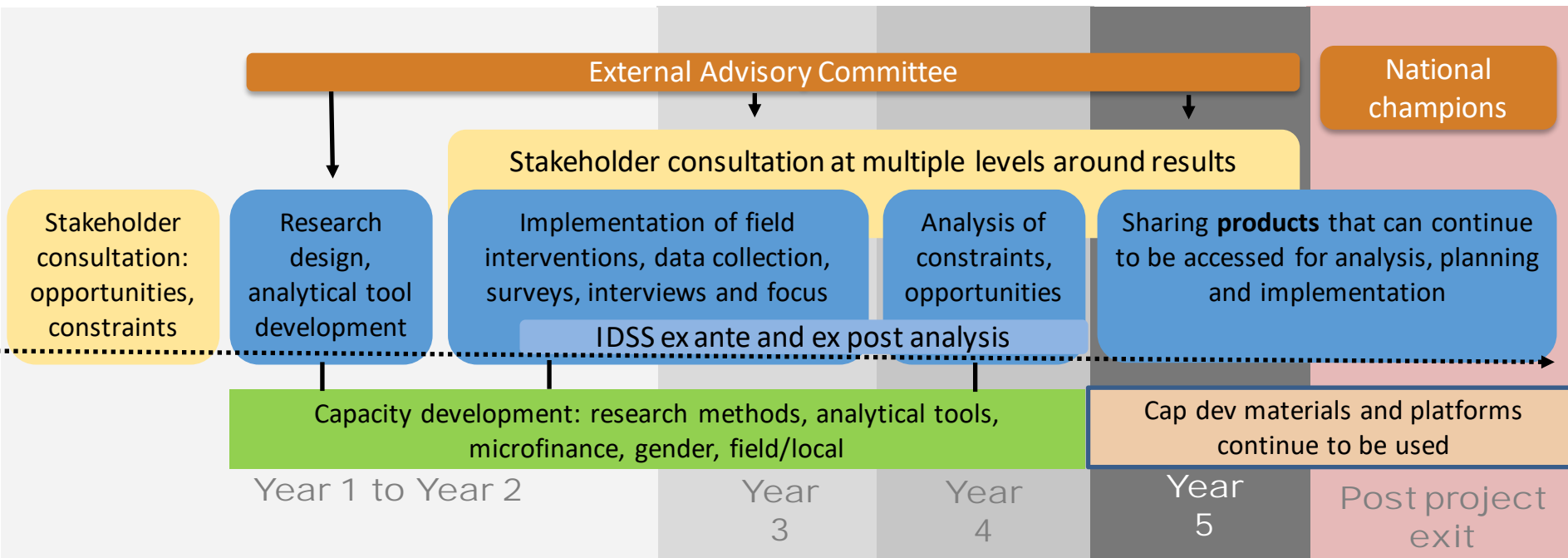
Moving toward outcomes: Engaging for Impact



Nicole Lefore

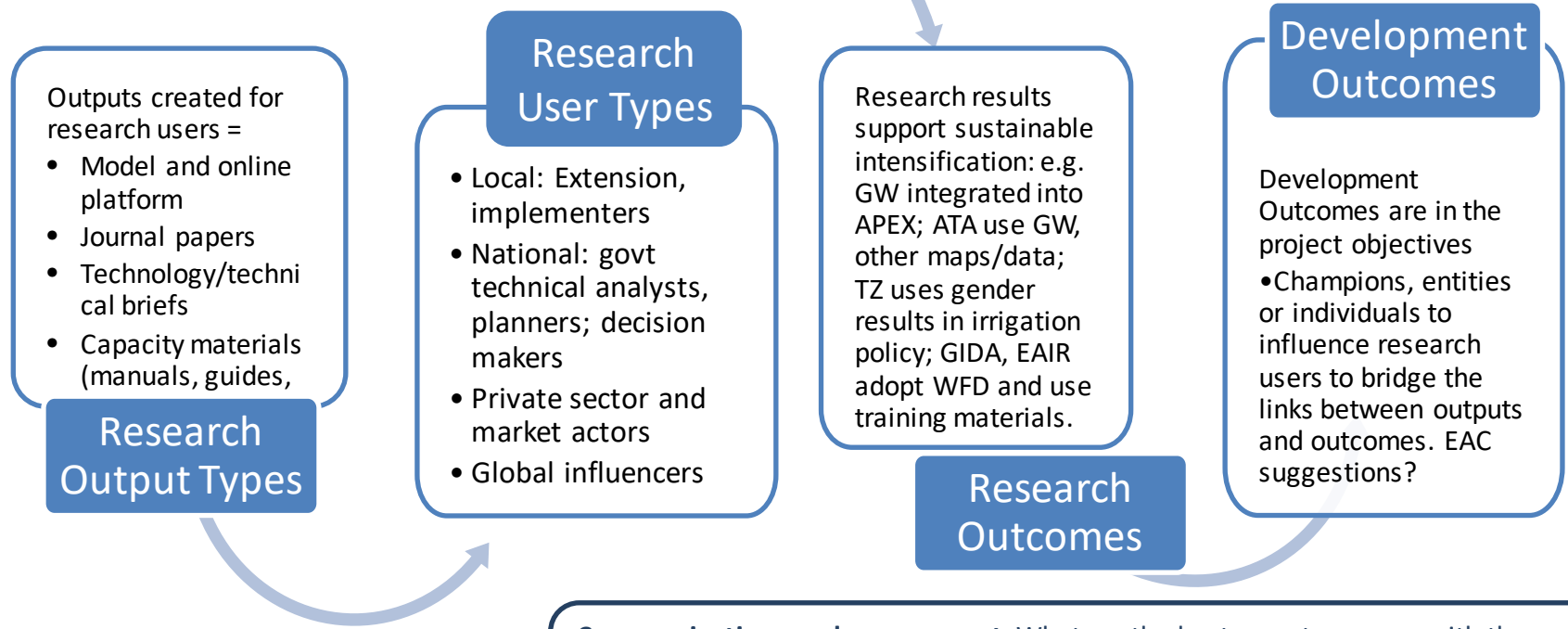


ILSSI RESEARCH FOR IMPACT - PROCESS





REFINING THE PATHWAY: MID-TERM REVIEW



Outputs created for research users =

- Model and online platform
- Journal papers
- Technology/technical briefs
- Capacity materials (manuals, guides,

Research Output Types

Research User Types

- Local: Extension, implementers
- National: govt technical analysts, planners; decision makers
- Private sector and market actors
- Global influencers

Research results support sustainable intensification: e.g. GW integrated into APEX; ATA use GW, other maps/data; TZ uses gender results in irrigation policy; GIDA, EAIR adopt WFD and use training materials.

Research Outcomes

Development Outcomes

Development Outcomes are in the project objectives
• Champions, entities or individuals to influence research users to bridge the links between outputs and outcomes. EAC suggestions?

Communications and engagement: What are the best ways to engage with the research user (individual meetings, working through a network, creating a platform, using the media)? What entry points or leverage does the team have with research users?



IDENTIFYING TARGETS: INFLUENCE MATRIX

- Built on previous projects, AgWater Solutions
- Spreadsheet of all actors engaged is maintained
- Key targets emerged through activities
- General targets via social media, web

INTEREST

High interest/Low Influence
 High interest in topic but limited power to directly implement business models (e.g., agricultural research organizations)
ACTION: Keep this group informed through broad dissemination strategy and solicit specific feedback and help as required

Low interest/Low Influence
 Limited interest and power to implement business models, but may have complementary interests (NGOs working on non-agriculture related rural development projects)
ACTION: Keep this group informed through the broad dissemination strategy. Monitor to see if their situations change

High interest/High Influence
 High power and interest to influence or directly implement business models (e.g., Ministry of Agriculture, donor organizations, private sector)
ACTION: Involve at the start and work increasingly closely with individual organizations within this group as the project findings/recommendations are developed

Low interest/High Influence
 Limited interest to directly influence or implement AWM programs, but high degree of influence in relevant sectors (e.g., Ministry of Energy, Trade, donors)
ACTION: Keep this group informed through broader dissemination strategy and engage in relevant parts of business models (e.g. tax departments may not be interested in AWM but they influence tax on AWM equipment). Seek to raise their interest level with more one-to-one attention.

POWER/INFLUENCE



FEED THE FUTURE

The U.S. Government's Global Hunger & Food Security Initiative

ENGAGEMENT ACTIVITIES TO DATE



USAID
FROM THE AMERICAN PEOPLE



TEXAS A&M
AGRI LIFE
RESEARCH



THE TEXAS A&M
UNIVERSITY SYSTEM



INTERNATIONAL FOOD
POLICY RESEARCH INSTITUTE
sustainable solutions for ending hunger and poverty
Supported by the CGIAR



IWMI
International
Water Management
Institute



ILRI
INTERNATIONAL
LIVESTOCK RESEARCH
INSTITUTE



NORTH CAROLINA A&T
STATE UNIVERSITY



GLOBAL AND REGIONAL LEVEL – INFLUENCING THINKING AND INVESTMENT

- **Africa Water Week**, “New approaches for Inclusive Irrigation: Tools and Findings from Research in Ghana, Ethiopia and Tanzania”, Tanzania, July 2016,
- **Stockholm World Water Week**, "Enabling investment in irrigation in sub-Saharan Africa“, Aug/Sep 2016
- **Stockholm World Water Week**, "Beyond the Drinking Glass: Expanding our Understanding of Water-Nutrition Linkages", Aug/Sep 2016.
- USAID's **Global Learning and Evidence Exchange (GLEE)** on Climate-Smart Agriculture in Lusaka, Zambia, March 2016
- **Nebraska Water for Food Conference**, “Opportunities and Challenges of Expanding Smallholder Irrigation in Sub-Saharan Africa”, April 2016
- **Tropentag Conference**, Improving on-farm water management by introducing wetting front detectors to small scale irrigators in Ethiopia, September 2016



FEED THE FUTURE

The U.S. Government's Global Hunger & Food Security Initiative

NATIONAL LEVEL DECISION MAKING AND PLANNING TO DATE

- Gender-irrigation workshops, March - April 2016
- Consultation workshops on constraints, June – July 2016
- Research to Policy Forum with Savannah Accelerated Development Authority and Ministry of Food and Agriculture of Ghana, February 2016
- Invited presentation for ATA Ethiopia on irrigation potential mapping, August 2016
- EAIR 50 years celebration, Demonstration on technologies
- Presentation to GIDA (Ghana), February 2016
- Presentations to USAID missions and other development partners
- Solar pump supply company
- iDE country offices



THE TEXAS A&M
UNIVERSITY SYSTEM



INTERNATIONAL FOOD
POLICY RESEARCH INSTITUTE
sustainable solutions for ending hunger and poverty
Supported by the CGIAR



NORTH CAROLINA A&T
STATE UNIVERSITY



FEED THE FUTURE

The U.S. Government's Global Hunger & Food Security Initiative

LOCAL LEVEL ENGAGEMENT, CAPACITY

- local level trainings and farmer forums: farmers (women, men, youth), extension, financial cooperatives, technical specialists, artisans
- irrigation and agricultural water management
- agronomy
- irrigated farming as a business
- installing and repairing technologies farmers, local plumbers and artisans
- savings and loans, managing revolving loan funds
- FEAST/fodder (napier/desho, intercropping legumes, water management)
- data collection and management for students and local data collectors



THE TEXAS A&M
UNIVERSITY SYSTEM



INTERNATIONAL FOOD
POLICY RESEARCH INSTITUTE
sustainable solutions for ending hunger and poverty
Supported by the CGIAR



NORTH CAROLINA A&T
STATE UNIVERSITY

COMMUNICATIONS: MEDIA AND INTERVENTIONS

Development video on potential impact of SSI on households and livelihoods

“Irrigation on rise in Africa as farmers face erratic weather”, Reuters, September

Blogs:

On wetting front detectors: <http://www.iwmi.cgiar.org/2015/09/not-so-quiet-on-the-wetting-front/>;

On gender and small-scale irrigation: <https://wle.cgiar.org/thrive/big-questions/what-should-we-be-asking-understand-gender-dynamics-irrigation/investigating>] on

Goldilocks Dilemma of Balancing Irrigation Technologies, Policies and Institutions
<https://wle.cgiar.org/thrive/2016/02/03/goldilocks-dilemma-irrigation>).

How Women Can Maximize the Nutrition and Health Benefits of Irrigation for All
<http://a4nh.cgiar.org/2015/10/26/how-women-can-maximize-the-nutrition-and-health-benefits-of-irrigation-for-all/>



FEED THE FUTURE

The U.S. Government's Global Hunger & Food Security Initiative

OUTREACH PLANNING FOR IMPACT



USAID
FROM THE AMERICAN PEOPLE



TEXAS A&M
AGRI LIFE
RESEARCH



THE TEXAS A&M
UNIVERSITY SYSTEM



INTERNATIONAL FOOD
POLICY RESEARCH INSTITUTE
sustainable solutions for ending hunger and poverty
Supported by the CGIAR



IWMI
International
Water Management
Institute



ILRI
INTERNATIONAL
LIVESTOCK RESEARCH
INSTITUTE



NORTH CAROLINA A&T
STATE UNIVERSITY



FEED THE FUTURE

The U.S. Government's Global Hunger & Food Security Initiative

ETHIOPIA

Emerging users, outputs, methods

Work with EAC, post-exit champions

Research Outputs

- Model of irrigation potential, mapping
- Journal papers for whom?
- Technology/technical briefs: irrigation and nutrition; cost-benefit WLTs; WFD; fodder; small loans/credit; gender?
- Capacity materials: WFD; microfinance; manual on using IDSS online platform?

Research User

- Local: BoA, SARI, ARARI, cooperatives
- National: ATA, EAIR, MoANR, MoWIE, public health institute, Livestock Min.
- Private sector/market: FuturePump; OMFI
- Development actors: iDE, USAID, IFAD, ??

Research outcomes: **Is it enough to have impact?**

GW integrated into APEX; ATA use GW, other maps/data; EAIR adopt WFD and use materials; ARARI, SARI use FEAST, fodder info

Research Outcomes

Development Outcomes

SI via SSI, more efficient SSI use, improved nutrition

- Which entities or individuals can influence research users to bridge the links between outputs and outcomes? Champions?

Communications and engagement: Engage with the research user: ATA and EAIR = Individual meetings and consultation workshop(s). Microfinance influence by engaging the MFI network, local conference, regulatory institution for microfinance. Field visits by regional/national?

Entry points or leverage does the team have with research users: Hosting small scale irrigation platform, donor platform??



USAID
FROM THE AMERICAN PEOPLE



AGRILIFE RESEARCH



THE TEXAS A&M UNIVERSITY SYSTEM



INTERNATIONAL FOOD POLICY RESEARCH INSTITUTE
sustainable solutions for ending hunger and poverty
Supported by the CGIAR



IWM
International Water Management Institute



IFRI
INTERNATIONAL LIVESTOCK RESEARCH INSTITUTE



NORTH CAROLINA A&T STATE UNIVERSITY



ETHIOPIA – ENGAGEMENT ACTIVITY MATRIX

| Level | Government/public sector | Development partners (non-gov) | Private sector |
|---|--|---|---|
| Sub-national targets for sharing research results | Research institutes: ARARI, SARI Universities: BDU, AMU, AAU Bureau of Agriculture (regional/district) | | Quasi-public sector microfinance orgs (e.g. OMFI) |
| Knowledge products and topic | Tools: FEAST Manuals, info sheets: Irrig Scheduling and WFD manual | | |
| National targets for sharing research results | ATA (specific targets, including gender) Ministry of Agriculture, Irrigation | iDE, ACDI-VOCA, SACE USAID IFAD (PASIDP2) Microfinance network | |
| Knowledge products | Maps Briefs (opportunities for scaling, cost-benefit, microfinance, nutrition, gender) | Maps Briefs (opportunities for scaling, cost-benefit, microfinance, nutrition, gender) | Maps Brief (existing and upscaling potential of technologies, practices) Brief (microfinance/CBA; supply chain) |
| Cross-cutting (Capacity) targets | SSI Capacity Task Force SMIS (support program for capdev) | | |
| Knowledge/training products | Manuals, info sheets: Irrig scheduling, irrigated forages Briefs (capacity and microfinance....) | | |
| Events (date) | Bi-lateral meetings | Bi-lateral meetings Opportunistic events (workshops, conferences) | Consultation targeted at private sector |





FEED THE FUTURE

The U.S. Government's Global Hunger & Food Security Initiative

GHANA

Emerging users, outputs, methods

Outputs created for research users =

- Model and online platform
- Technology/technical briefs
- Capacity materials (manuals, guides, videos)
- Data open access

Research Outputs

Research User Types

- Local but coordinated at higher level: Irrigation advisors/planners, extension, implementers (NGOs)
- National: GIDA, MoFA, MoFinance
- Private sector and market actors; microfinance; pump importers

GW integrated into APEX for GIDA use via maps/data;
 MOFA, MOF see potential for SSI investment, profit across time/crops;
 MASLOC, MFIs increase products for SSI;
 GIDA, development implementers made aware of technologies such as WFD, UDS drip design, training materials;
 MDAs related to irrigation sensitized on gender
 MOFA made aware of the potential for irrigated fodder/fodder markets
 Private sector aware of potential market size for technologies and need for packages with tech

Work with EAC, post-exit champions

Development Outcomes

- Contribute to improved nutrition and livelihoods of men and women farmers through sustainable intensification

Research Outcomes

Communications and engagement: GIDA as entry point to other government MDAs; AgSector Working Group entry point to donors and MoFA; SADA engaged as planner/coordinator for investments in north



THE TEXAS A&M UNIVERSITY SYSTEM



INTERNATIONAL FOOD POLICY RESEARCH INSTITUTE
sustainable solutions for ending hunger and poverty
Supported by the CGIAR



NORTH CAROLINA A&T STATE UNIVERSITY



FEED THE FUTURE

The U.S. Government's Global Hunger & Food Security Initiative

GHANA – ENGAGEMENT ACTIVITY MATRIX

| Level | Government/public sector | Development partners (non-gov) | Private sector |
|----------------------------------|--|---|---|
| Sub-national targets | Research institutes: WRI, ARI Universities: UDS Ministry of Agriculture (district) | | |
| Knowledge products | Tools: FEAST? (suitable for Ghana?) Manuals, info sheets: Irrig Scheduling and WFD manual | | |
| National targets | GIDA WIAD Ministry of Agriculture (with GIDA) SADA GCAP (with GIDA) | iDE, ACDI-VOCA, CRS, CARE USAID IFAD | IFDC Wienco Pump/irrigation suppliers TBD Ghamfin (microfinance) |
| Knowledge products | Maps Briefs (opportunities for scaling, cost-benefit, microfinance, nutrition, gender) | Maps Briefs (opportunities for scaling, cost-benefit, microfinance, nutrition, gender) | Maps Brief (existing and upscaling potential of technologies, practices) Brief (microfinance/CBA; supply chain) |
| Cross-cutting (Capacity) targets | GIDA | | |
| Knowledge products | Manuals, info sheets: Irrig scheduling Briefs (capacity and microfinance....) | | |
| Events (date) | Bi-lateral meetings | Bi-lateral meetings Opportunistic events (workshops, conferences) | Consultation targeted at private sector |



USAID
FROM THE AMERICAN PEOPLE



TEXAS A&M
AGRI LIFE
RESEARCH



THE TEXAS A&M
UNIVERSITY SYSTEM



INTERNATIONAL FOOD
POLICY RESEARCH INSTITUTE
sustainable solutions for ending hunger and poverty
Supported by the CGIAR



NORTH CAROLINA A&T
STATE UNIVERSITY



FEED THE FUTURE

The U.S. Government's Global Hunger & Food Security Initiative

TANZANIA

Emerging users, outputs, methods

Work with EAC, post-exit champions

Research Outputs

Models and online platform;
Technology/technical briefs: Irrigation & youth, pocket gardens
Online app used for data collection, analysis; Data open access
Journal papers

Research Users

National Irrigation Commission;
Irrigation advisors & planners, extension.
Implementers (NGOs, private sector)

Research Outcomes

GW integrated into APEX; NIC uses maps/data; Ministries use evidence on potential for SSI investment for SSI; Ministry of Agriculture, Livestock & Fisheries sensitized on potential for fodder

Development Outcomes

- More efficient SSI use
- Improved nutrition
- Entities and individuals use evidence in plans and programs





FEED THE FUTURE

The U.S. Government's Global Hunger & Food Security Initiative

TANZANIA – ENGAGEMENT ACTIVITY MATRIX

| Level | Government/public sector | Development partners (non-gov) | Private sector |
|----------------------------------|--|---|---|
| Sub-national targets | Research institutes: Universities: SUA Ministry of Agriculture? (district) | | |
| Knowledge products | Tools: FEAST Manuals, info sheets: Irrig Scheduling and WFD manual | | |
| National targets | Irrigation Commission | USAID | |
| Knowledge products | Maps Briefs (opportunities for scaling, cost-benefit, microfinance, nutrition, gender) | Maps Briefs (opportunities for scaling, cost-benefit, microfinance, nutrition, gender) | Maps Brief (existing and upscaling potential of technologies, practices) Brief (microfinance/CBA; supply chain) |
| Cross-cutting (Capacity) targets | | | |
| Knowledge products | Manuals, info sheets: Irrig scheduling, FEAST and ???? Briefs (capacity and microfinance....) | | |
| Events (date) | Bi-lateral meetings | Bi-lateral meetings Opportunistic events (workshops, conferences) | Consultation targeted at private sector |



USAID
FROM THE AMERICAN PEOPLE



TEXAS A&M
AGRI LIFE
RESEARCH



THE TEXAS A&M
UNIVERSITY SYSTEM



INTERNATIONAL FOOD
POLICY RESEARCH INSTITUTE
sustainable solutions for ending hunger and poverty
Supported by the CGIAR



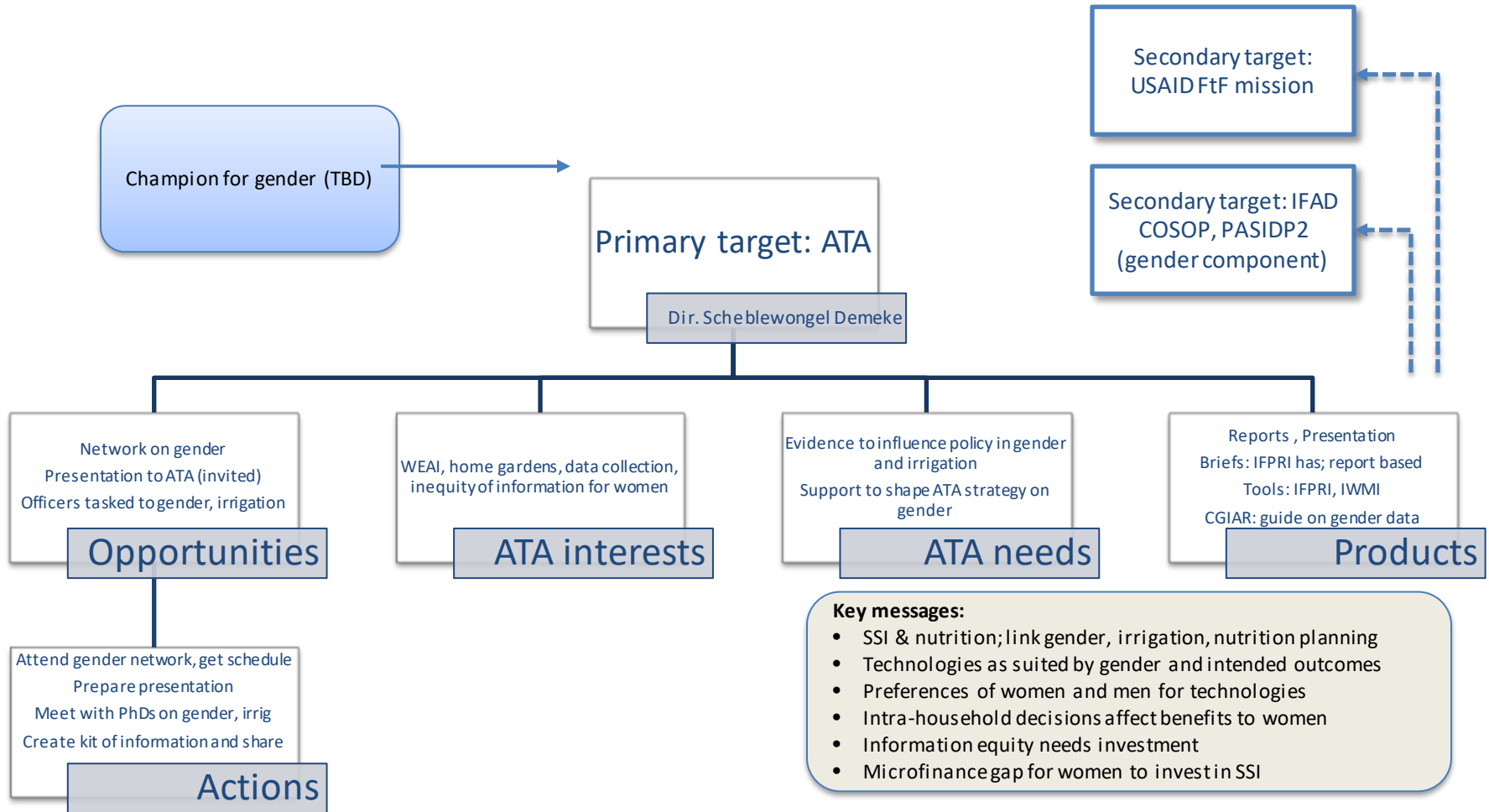
ILRI
INTERNATIONAL
LIVESTOCK RESEARCH
INSTITUTE



NORTH CAROLINA A&T
STATE UNIVERSITY



SPECIAL SUBJECT ENGAGEMENT: GENDER





FEED THE FUTURE

The U.S. Government's Global Hunger & Food Security Initiative

GLOBAL/REGIONAL ENGAGEMENT

Goals:

- Input to and shape scientific thinking, methods/approaches on SSI analysis
- Increase attention to SSI and inform investments/policy based on research evidence

Events (tentative):

- Global forum on water, World Bank, January 2018 – special session on ILSSI
- Regional and global forums – special sessions (e.g. Stockholm Water Week, Africa Water Week 2018)
- Special issue in scientific publication



THE TEXAS A&M
UNIVERSITY SYSTEM



INTERNATIONAL FOOD
POLICY RESEARCH INSTITUTE
sustainable solutions for ending hunger and poverty
Supported by the CGIAR



NORTH CAROLINA A&T
STATE UNIVERSITY



FEED THE FUTURE

The U.S. Government's Global Hunger & Food Security Initiative

ON-GOING ACTIVITIES

Capacity development

- Field level capdev continues
- Materials development (e.g. fodder decision tool, wetting front detector)
- IDSS trainings in project countries
- How To materials
- Microfinance materials (guide, training)

Engagement

- Refine key targets vs general targets
- Refine messages and conclusions
- Decide on suitable products for target groups
- Map activities for Year 4 and 5 for targets
- Identify best media/approach for key, general targets
- Plan targeted, broad sharing of knowledge products

Outreach and impact at different levels

